

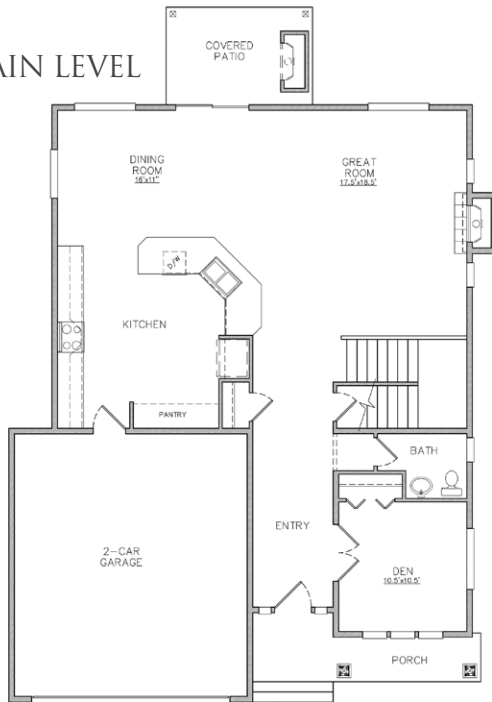
AT A GLANCE

- **2,660 Square Feet Total Living**
- 3 bedrooms, bonus room, plus great room
- Slab granite or quartz kitchen counters, full tile backsplash
- Stainless steel appliances with gas range
- Outdoor fireplace in the covered living area
- Laminate hardwood in entry, kitchen & hallway
- 5-piece master bath with free-standing tub & walk-in closet
- Front and rear landscaping
- 10-year home warranty included!

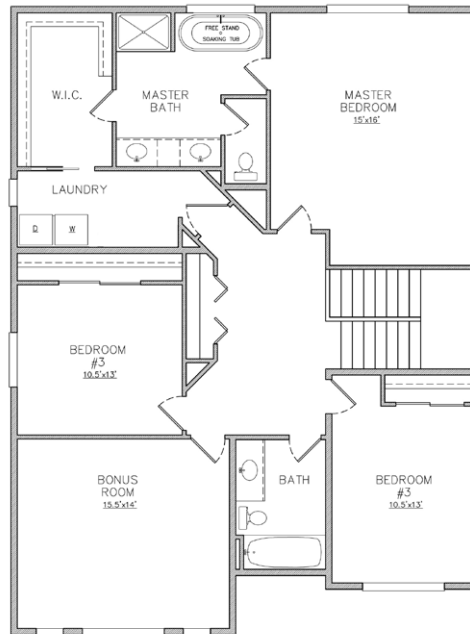


10201 186TH AVE E, BONNEY LAKE / MLS# 1100400

MAIN LEVEL



UPPER LEVEL



Driving Directions to Copperfield

From Hwy. 512 take the exit onto WA 167 N. Take the WA-410 E exit toward Sumner, turn Left onto Veterans Memorial Dr E. Turn Right onto Angeline Rd E, then Left on 104th St. Ct. E.



FOR SALES INFORMATION

Bill Riley
(253) 686-0654
or briley@govista.net



CUSTOM FINANCING OPPORTUNITIES

Andrew Gray, Sales Manager
at **(206) 403-6008** or
andrewg@fairwaymc.com



Fairway Independent Mortgage Corp. is an Equal Housing Opportunity Lender. Call your loan officer for details. Restrictions apply. NWLS ID: 300555

LAST UPDATED: August 2, 2017

*Lender will contribute up to **\$2,500** toward buyer's closing costs!*



Photo renderings are for illustrative purposes only. Builder reserves the right to make modifications and changes to prices, floorplans, interior/exterior design, materials and specifications at any time without prior notice and/or obligation.